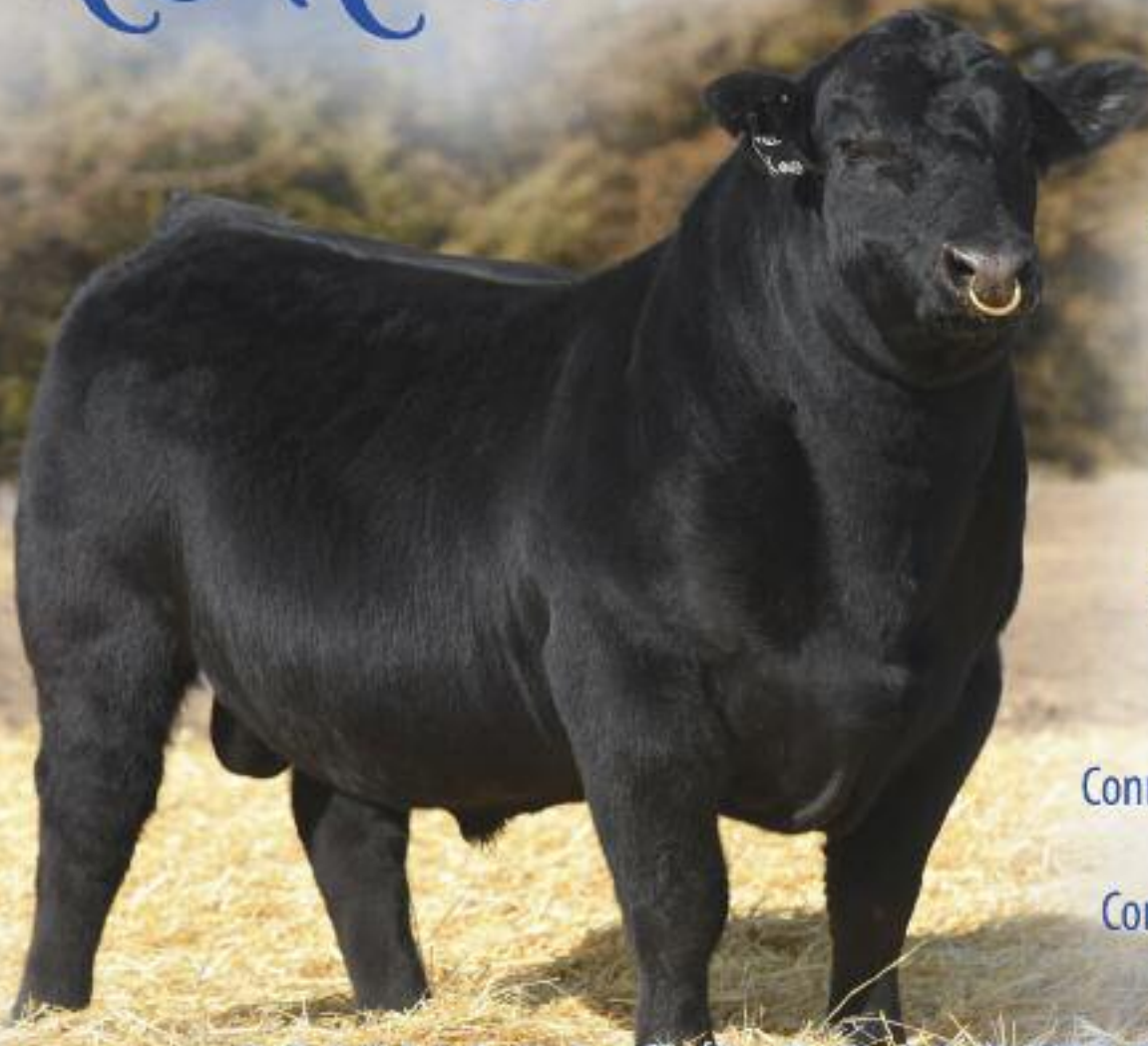


# R&R Cattle Company



Featuring Sires:

*Simmental*

TKCC Carver

CCR Cowboy Cut

Pays To Dream

J Bar J Nightride

Rust Component

KR Mandan

*Angus*

Connealy Confidence Plus

SAV Bismark

Connealy Right Answer

## ANNUAL PRODUCTION SALE

Friday, February 16, 2018 • 1 p.m. • At the ranch, Chamberlain, SD

*with guest consignors*

*Cable's*

*C Cross Ranch*



Steve & Elaine Reimer 605-234-6111/605-680-1939

[www.RRCattleCo.com](http://www.RRCattleCo.com) [rrcattle@midstatesd.net](mailto:rrcattle@midstatesd.net)

The sale will be broadcast live on the internet.

**DVAuction**

Bringing Best-Tier Auctions  
Real-Time Bidding & Easy Bidding

# Annual Bull Female Sale

Friday, February 16, 2018

1:00 PM • at the Ranch • Chamberlain, SD

## Selling 55 Yearling Bulls and 10 Open Heifers



*R&R Cattle Company*

25657 345th Ave  
Chamberlain, SD 57325

605-234-6111 • 605-680-1939

rrcattle@midstatesd.net • www.rrcattleco.com

Cattlemen,

Welcome to our 2018 Bull and Female Sale. We will be hosting the sale here at the ranch. Harley and Dawn Cable, C Cross Ranch will again be guest consignors

The bulls are being developed on each ranch in their own contemporary groups. Individual performance information, ultra sound data and expected progeny differences will be available on each bull to help you with your decision-making process.

We will again offer to continue to develop the bulls at no charge until April 1st. At that time delivery arrangements will be made. The first 300 miles will be free delivery and after that will be at cost.

Martin-Trudeau Insurance will be on hand to help you with your Livestock Mortality Insurance.

We encourage you to give us a call to stop in and go through the bulls and heifers with us.

*Steve and Elaine*



### Sale Day Phone

Steve 605-680-1939

Elaine 605-680-1875

### Steve & Elaine Reimer

www.rrcattleco.com • rrcattleco@midstatesd.net

25657 345th Ave, Chamberlain, SD 57325

605-234-6111 (H) • 605-680-1939 (C)

### C Cross Ranch, Guest Consignor:

Harley & Dawn Cable, Pukwana, SD 605-894-4464

### Sale Representatives:

Colton Buus, ASA Field Rep 605-214-3532

Chris Effling, Special Assignment 605-796-0142

Jeff Kapperman, Tri-State Neighbor 605-363-3302

Dan Piroutek, Tri-State Livestock 605-544-3316

Jim Scheel, Cattle Business Weekly 605-545-1521

### Auctioneer:

Chisum Peterson 605-234-4214 (C) 605-730-4214

### Directions to Sale Facility

From I-90: Take Exit 265 at Chamberlain, 8 miles South on 344th Ave, 1 mile East on 257th St, 1/2 mile North on 345th Ave

### Announcements:

Announcements made sale day take precedence over printed material. Anyone attending this sale does so at their own risk.

R&R Cattle Company and sale representatives will not be held responsible for any personal injury while attending this sale. Please let sale clerks know transportation plans. Please note the EPDs may change from the time of the sale catalog is printed until registration papers are transferred.

ALL bulls have been tested BVD/PI free.

Yearling weights, scrotal measurements, and Average Daily Gain information will be available online and on a sale-day supplement sheet.

R & R Cattle Company retains 1/4 revenue sharing semen interest in semen sold from bulls in this sale.

### Livestock Mortality Insurance

Martin-Trudeau Insurance, Mitchell, SD

605-996-3106 or 605-770-5170



# REFERENCE SIRES

## AMERICAN SIMMENTAL ASSOCIATION EPD SEARCH RESULTS

Name	Breeds	CE	BW	WW	YW	MCE	MM	MWW	Stay	CW	YG	Marb	BF	REA	API	TI
<b>Simmental Bulls</b>																
CABLES 2 HIT WONDER 522C	PB SM	5	4.5	73.6	108.8	3.9	18.9	55.7	13.4	41.1	-.28	.28	-.029	1.04	127	74
CCR COWBOY CUT 5048Z	PB SM	17.5	1.8	85.9	117.2	13.5	36.9	79.9	8.8	41.1	-.11	.68	.008	.78	163	97
CNS PAYS TO DREAM T759	PB SM	11.4	1.1	46.2	79	12.5	13.4	36.5	7.3	19.5	-.29	.54	-.026	.82	135	70
MR TR HAMMER 308A ET	PB SM	2.3	2.3	87.3	143.2	6	16.2	59.9	9.6	58.6	-.30	.12	-.071	.98	120	82
TKCC CARVER 65C	PB SM	11.2	0.9	70.7	93.5	8.1	15.2	50.5	7	26.1	-.20	.31	-.022	.66	127	78
<b>SimAngus Bulls</b>																
RUST COMPONENT 306C	1/2 SM 1/2 AN	5.7	4.6	85.8	133.6	3.5	22.6	65.5	13.4	55.9	.09	.39	.011	.38	128	79
W/C LOCK DOWN 206Z	1/2 SM 1/2 AN	19.4	-2.3	68.6	108.1	-3.7	9.9	44.3	9.9	30.9	-.08	.43	-.010	.42	148	79
W/C UNITED 956Y	1/2 SM 1/2 AN	11.3	0.5	93.3	158.1	6.7	15.1	61.8	9.1	64.9	.09	.50	.027	.61	146	92
KR MR MANDAN A1	3/4 SM 1/4 AN	17	-0.5	61.9	108	10.6	26	57	9.4	34.2	-.24	.26	-.040	.72	131	71
R&R CHAMBERLAIN X744	3/4 SM 1/4 AN	3.1	5.8	88.8	122.6	-0.6	19.8	64.2	8.4	50.4	-.34	.23	-.104	.76	105	75
R&R SHAQ A049	3/4 SM 1/4 AN	8.1	0.7	61.3	93.7	4.6	29	59.6	19.8	26.9	-.31	.25	-.027	.96	145	73
J BAR J NIGHTRIDE 225Z	5/8 SM 3/8 AN	22.8	-4.8	56.5	91.8	11.4	12.7	41	9.6	17.8	-.13	.93	-.004	.48	180	88
<b>Angus Bulls</b>																
B M DASH 2328	PB AN	20	-4.6	38.4	69	7.6	23.1	42.3	6.6	5.2	.08	.77	.066	.20	133	63
BARSTOW CASH	PB AN	20.4	-2.8	76.2	143.9	12.1	14	52	13.7	52.5	-.18	.43	-.020	.93	146	77
BUSHS UNBELIEVABLE423	PB AN	18.8	-2	60.3	98.3	11.9	18.6	48.7	10.2	25.8	-.10	.79	-.027	.29	144	74
CONNEALY CONFIDENCE PLUS	PB AN	24.4	-4.5	75.7	140.3	10.2	26.2	64	8.3	47.6	-.01	.91	.042	.84	146	81
CONNEALY RIGHT ANSWER 746	PB AN	20.1	-2.8	75.4	135.5	2.8	26.6	64.3	8.9	47.1	.29	.47	.027	-.21	133	76
PVF INSIGHT 0129	PB AN	14	0.2	78.2	138.3	4.6	18.4	57.5	9.5	53.2	-.28	.22	.011	1.52	112	69
S A V BISMARCK 5682	PB AN	20.7	-2.6	66.5	108.6	9.8	21.5	54.7	6.4	31	-.06	.37	.017	.60	119	68
VIN-MAR O'REILLY FACTOR	PB AN	16.5	-2.8	68.3	128.3	11.1	26.2	60.3	10.4	43.2	.00	.43	-.018	.28	129	72



CCR Cowboy Cut



CNS Pays To Dream



TKCC Carver



Connealy Confidence



R&R Chamberlain



W/C United

# DVAuction

Broadcasting Real-Time Auctions

Never Miss An Auction Again!  
Watch & Bid online for FREE!

Visit [www.DVAuction.com](http://www.DVAuction.com)  
and Register Today!

For General Questions Please Contact Our Office:  
(402) 316-5460 or support@dvauction.com



LOT 2

## R&R CARVER E726

Black Polled 5/8 SM 3/8 AN  
BD: 3/6/17

Tattoo: E726  
ASA# (3321233)

WS PILGRIM H182U  
Sire: **TKCC CARVER 65C**  
FORD RJ DOLLY Y83  
CONNEALY FINAL PRODUCT  
Dam: **R&R MISS PRODUCT Z256**  
R&R MISS UPGRADE X056

BW	84
Adj. WW	724
API	128
TI	75

CE	BW	WW	YW	MCE	MM	MWW	Stay	CW	YG	Marb	BF	REA
12.4	-0.9	65.5	98.2	7	20.2	52.9	7.8	26.9	-.20	.40	-.021	.67

Lot 1 is a low birth weight Carver son with a strong maternal background. Keep the heifers out of him.

## R&R CARVER E740

Black Polled PB SM  
BD: 3/12/17

Tattoo: E740  
ASA# (3321210)

WS PILGRIM H182U  
Sire: **TKCC CARVER 65C**  
FORD RJ DOLLY Y83  
REMINGTON LOCK N LOAD54U  
Dam: **R&R MISS LOADED A312**  
R&R PREF BEEF P448

BW	88
Adj. WW	782
API	123
TI	72

CE	BW	WW	YW	MCE	MM	MWW	Stay	CW	YG	Marb	BF	REA
10.5	1.4	66.2	98	8.2	16.2	49.3	8.7	30.1	-.27	.19	-.041	.77

Consistent power producing cow family. E740 has been a stought-made attractive calf from day 1. Strong in calving ease and growth numbers.

## R&R CARVER E744

Black Polled 5/8 SM 3/8 AN  
BD: 3/13/17

Tattoo: E744  
ASA# (3321218)

WS PILGRIM H182U  
Sire: **TKCC CARVER 65C**  
FORD RJ DOLLY Y83  
CONNEALY THUNDER  
Dam: **R&R MISS THUNDER A301**  
R&R TYRA Y135

BW	88
Adj. WW	676
API	127
TI	69

CE	BW	WW	YW	MCE	MM	MWW	Stay	CW	YG	Marb	BF	REA
13.1	-0.2	57.8	88.3	8.3	22.6	51.5	9.9	22.4	-.15	.35	-.008	.57

Multiple generation black and polled Carver son out of a Connealy Thunder dam.

## R&R CARVER E748

Black Polled PB SM  
BD: 3/14/17

Tattoo: E748  
ASA# (3321160)

WS PILGRIM H182U  
Sire: **TKCC CARVER 65C**  
FORD RJ DOLLY Y83  
R&R CHAMBERLAIN X744  
Dam: **R&R JASMINES JEWEL Z223**  
R&R JASMINE R523

BW	86
Adj. WW	694
API	123
TI	77

CE	BW	WW	YW	MCE	MM	MWW	Stay	CW	YG	Marb	BF	REA
9.1	1.6	73.7	99.3	6.2	18.6	55.5	8.1	30.5	-.27	.23	-.058	.64

Strong numerical values for weaning and yearling growth from a great cow family.

## R&R CARVER E762

Black Polled PB SM  
BD: 3/17/17

Tattoo: E762  
ASA# (3321225)

WS PILGRIM H182U  
Sire: **TKCC CARVER 65C**  
FORD RJ DOLLY Y83  
MR NLC UPGRADE U8676  
Dam: **R&R MISS UPGRADE A343**  
R&R MISS 878 P424

BW	82
Adj. WW	671
API	130
TI	73

CE	BW	WW	YW	MCE	MM	MWW	Stay	CW	YG	Marb	BF	REA
13.3	-1.1	56.8	79.1	8.7	18.2	46.6	7.3	15.1	-.31	.30	-.049	.66

Excellent calving ease potential and out of a proven daughter of Upgrade.

## R&R CARVER E765

Black Polled 3/4 SM 1/4 AN  
BD: 3/18/17

Tattoo: E765  
ASA# (3321194)

WS PILGRIM H182U  
Sire: **TKCC CARVER 65C**  
FORD RJ DOLLY Y83  
S A V NET WORTH 4200  
Dam: **R&R MISS WORTH X017**  
R&R MISS CASH L130

BW	105
Adj. WW	799
API	113
TI	73

CE	BW	WW	YW	MCE	MM	MWW	Stay	CW	YG	Marb	BF	REA
6.3	4.4	76.7	111.4	8	22.1	60.4	8.3	42.3	-.10	.36	-.016	.57

Definitely a strong prospect for weaning and yearling growth out of a performance proven SAV Network daughter.

LOT 7

## R&R CARVER E771

Black Polled 3/4 SM 1/8 AN 1/8 MX  
BD: 3/18/17

Tattoo: E771  
ASA# (3321222)

WS PILGRIM H182U

Sire: **TKCC CARVER 65C**  
FORD RJ DOLLY Y83

TJ SHARPER IMAGE 809U

Dam: **R&R MISS IMAGE Z283**  
R&R MISS LEGACY P49

BW	90
Adj. WW	767
API	118
TI	71

CE	BW	WW	YW	MCE	MM	MWW	Stay	CW	YG	Marb	BF	REA
10.7	0.8	70.8	96.1	7.1	20.4	55.8	9.7	27.5	-.18	.24	-.034	.51

This Carver sired prospect out of a proven cow family has had a great look from birth with solid numerical values.



LOT 7

LOT 8

## R&R CARVER E767

Black Polled 1/2 SM 1/2 AN  
BD: 3/18/17

Tattoo: E767  
ASA# (3321201)

WS PILGRIM H182U

Sire: **TKCC CARVER 65C**  
FORD RJ DOLLY Y83

S A V BISMARCK 5682

Dam: **R&R MISS BISMARCK Y122**  
R&R MISS GRIDIRON W952

BW	78
Adj. WW	697
API	126
TI	72

CE	BW	WW	YW	MCE	MM	MWW	Stay	CW	YG	Marb	BF	REA
14	-0.5	63	97.1	8.5	21.5	53	7.9	27	-.17	.33	-.017	.61

Strong maternal background out of one of our top SAV Bismarck daughters.

LOT 9

## R&R CARVER E789

Black Polled 3/4 SM 1/4 AN  
BD: 3/22/17

Tattoo: E789  
ASA# (3321157)

WS PILGRIM H182U

Sire: **TKCC CARVER 65C**  
FORD RJ DOLLY Y83

S A V 8180 TRAVELER 004

Dam: **R&R MISS TRAVELER W916**  
R&R MISS CASH M203

BW	92
Adj. WW	837
API	123
TI	73

CE	BW	WW	YW	MCE	MM	MWW	Stay	CW	YG	Marb	BF	REA
10.4	0.9	72.4	103.2	7.9	21.4	57.6	10.9	32.2	-.16	.26	-.024	.58

An attractive heavy muscled Carver son out of the high performing 203 donor cow family.

LOT 10

## R&R CARVER E792

Black Polled 3/4 SM 1/4 MX  
BD: 3/23/17

Tattoo: E792  
ASA# (3321165)

WS PILGRIM H182U

Sire: **TKCC CARVER 65C**  
FORD RJ DOLLY Y83

HS/HOOKS PACESETTER 162

Dam: **R&R MISS PACESETTER W941**  
H824

BW	90
Adj. WW	757
API	109
TI	66

CE	BW	WW	YW	MCE	MM	MWW	Stay	CW	YG	Marb	BF	REA
10.2	1.5	63.5	85.5	6.8	22.1	53.8	7.8	22.4	-.19	.23	-.048	.36

E792 is out of a strong maternal cow family with a lot of longevity.



TKCC Carver – Sire of Lots 1-12

LOT 11

## R&R CARVER E7109

Black Polled PB SM  
BD: 3/29/17

Tattoo: E7109  
ASA# (3321189)

WS PILGRIM H182U

Sire: **TKCC CARVER 65C**  
FORD RJ DOLLY Y83

MR NLC UPGRADE U8676

Dam: **R&R MISS UPGRADE X034**  
R&R MISS LEAD ON T725

BW	88
Adj. WW	841
API	138
TI	88

CE	BW	WW	YW	MCE	MM	MWW	Stay	CW	YG	Marb	BF	REA
9.4	1.5	84.7	125.6	7.8	17.8	60.1	8.2	46.2	-.25	.38	-.056	.80

One of our top prospects from a proven cow family; exceptional weaning and yearling performance with a great look.



LOT 11





LOT 12

## R&R CARVER E7118

Black Polled PB SM  
BD: 4/4/17

Tattoo: E7118  
ASA# (3321131)

WS PILGRIM H182U

Sire: **TKCC CARVER 65C**  
FORD RJ DOLLY Y83

FLYING B CUT ABOVE

Dam: **R&R ABOVE AND BEYOND**  
R&R MISS 878 P451

BW	90
Adj. WW	871
API	134
TI	80

CE	BW	WW	YW	MCE	MM	MWW	Stay	CW	YG	Marb	BF	REA
8.7	1.9	75.6	111.1	8.6	21.5	59.3	10.9	38.4	-.04	.33	.004	.49

A black blaze-faced herdsire prospect out of a top cow family. Number 1 out of 57 in his contemporary group.



LOT 13

## R&R COWBOY CUT E724 ET

Black Polled PB SM  
BD: 3/2/17

Tattoo: E724  
ASA# (3321208)

TRIPLE C SINGLETARY S3H

Sire: **CCR COWBOY CUT 5048Z**  
CCR MS 4045 TIME 7322T

CNS DREAM ON L186

Dam: **R&R SWEET DREAMS T701**  
R&R MISS LIBERTY R515

BW	78
Adj. WW	714
API	151
TI	88

CE	BW	WW	YW	MCE	MM	MWW	Stay	CW	YG	Marb	BF	REA
14.4	2.4	82.2	122	14.2	29.4	70.5	11.8	45.5	-.18	.42	-.023	.82

One of 3 flush brothers out of our 701 donor and Cowboy Cut. Breed leading numerical values in a very attractive package.

## R&R COWBOY CUT E730

LOT 14

Black Polled PB SM  
BD: 3/8/17

Tattoo: E730  
ASA# (3321199)

TRIPLE C SINGLETARY S3H

Sire: **CCR COWBOY CUT 5048Z**  
CCR MS 4045 TIME 7322T

ASR LONGEVITY Y184

Dam: **R&R MISS LONGEVITY A332**  
R&R MISS ICON W968

BW	85
Adj. WW	693
API	150
TI	83

CE	BW	WW	YW	MCE	MM	MWW	Stay	CW	YG	Marb	BF	REA
13.6	1	72	100.1	13.3	24.1	60.1	12	30.3	-.23	.46	-.017	.84

Stought-made, moderate framed, great numbers.



LOT 16

## R&R COWBOY CUT E754

Black Polled 3/4 SM 1/4 AN  
BD: 3/16/17

Tattoo: E754  
ASA# (3321229)

TRIPLE C SINGLETARY S3H

Sire: **CCR COWBOY CUT 5048Z**  
CCR MS 4045 TIME 7322T

MR NLC UPGRADE U8676

Dam: **R&R MYSTIC LADY Z284**  
R&R MISS LEAD ON S615

BW	88
Adj. WW	799
API	152
TI	94

CE	BW	WW	YW	MCE	MM	MWW	Stay	CW	YG	Marb	BF	REA
13.9	1	83.2	123.3	9.7	27.9	69.5	7.3	44.2	-.21	.57	-.035	.79

E754 combines top end performance, breed leading numerical values and a proven performance pedigree.

LOT 17

## R&R COWBOY CUT E766 ET

Black Polled PB SM Tattoo: E766  
BD: 3/18/17 ASA# (3321130)

TRIPLE C SINGLETARY S3H

Sire: **CCR COWBOY CUT 5048Z**  
CCR MS 4045 TIME 7322T

CNS DREAM ON L186

Dam: **R&R SWEET DREAMS T701**  
R&R MISS LIBERTY R515

BW	85
Adj. WW	828
API	151
TI	88

CE	BW	WW	YW	MCE	MM	MWW	Stay	CW	YG	Marb	BF	REA
14.4	2.4	82.2	122	14.2	29.4	70.5	11.8	45.5	-.18	.42	-.023	.82

ET out of Cowboy Cut and 701 donor. Great numbers and a progeny proven pedigree.

LOT 18

## R&R COWBOY CUT E794

Black Polled 5/8 SM 1/4 AN 1/8 MX Tattoo: E794  
BD: 3/23/17 ASA# (3321200)

TRIPLE C SINGLETARY S3H

Sire: **CCR COWBOY CUT 5048Z**  
CCR MS 4045 TIME 7322T

TC GRIDIRON 258

Dam: **R&R MISS GRIDIRON U829**  
R&R MISS LEGACY P49

BW	95
Adj. WW	760
API	130
TI	80

CE	BW	WW	YW	MCE	MM	MWW	Stay	CW	YG	Marb	BF	REA
12.5	2	75.1	102.5	10.2	27	64.5	7.8	33	-.12	.49	-.011	.58

Quality out of a proven cow family. Lot 7 and Lot 18 are both strong sire prospects out of the P49 Legacy cow family.

LOT 19

## R&R E795

Black Polled PB SM Tattoo: E795  
BD: 3/23/17 ASA# (3321221)

TRIPLE C SINGLETARY S3H

Sire: **CCR COWBOY CUT 5048Z**  
CCR MS 4045 TIME 7322T

WELSHS DEW IT RIGHT067T

Dam: **R&R MISS DIR B407**  
R&R QUEEN Z204

BW	95
Adj. WW	841
API	148
TI	89

CE	BW	WW	YW	MCE	MM	MWW	Stay	CW	YG	Marb	BF	REA
14.1	3.3	88.5	125.2	12.5	24.3	68.5	11.6	48.3	-.16	.39	-.026	.77

Moderate framed heavy muscled, strong numerical numbers with a proven pedigree.

LOT 20

## R&R COWBOY CUT E799

Black Polled PB SM Tattoo: E799  
BD: 3/26/17 ASA# (3321125)

TRIPLE C SINGLETARY S3H

Sire: **CCR COWBOY CUT 5048Z**  
CCR MS 4045 TIME 7322T

MR NLC UPGRADE U8676

Dam: **R&R SPELLBOUND Y145**  
R&R TRISHA P412

BW	86
Adj. WW	741
API	145
TI	87

CE	BW	WW	YW	MCE	MM	MWW	Stay	CW	YG	Marb	BF	REA
13.8	1	76.7	108.1	8.9	29.6	68	8.7	35	-.26	.44	-.035	.86

Strong pedigree with proven sires. Moderate framed with strong performance numbers.

LOT 21

## R&R PAYS TO DREAM E753

Black Polled 1/2 SM 15/32 AN 1/32 CS Tattoo: E753  
BD: 3/15/17 ASA# (3321191)

CNS DREAM ON L186

Sire: **CNS PAYS TO DREAM T759**  
MLF BL JESSIE K336

CONNEALY RIGHT ANSWER 746

Dam: **COMMERCIAL**  
R&R MISS BISMARCK Y122

BW	85
Adj. WW	746
API	134
TI	74

CE	BW	WW	YW	MCE	MM	MWW	Stay	CW	YG	Marb	BF	REA
14.2	0	61.7	109.4	9.4	20.9	51.8	8.2	35.9	-.07	.46	-.005	.51

E753 combines time proven Simmental and Angus sires, Dream On, Right Answer and Bismarck. Strong API and TI values.

LOT 22

## R&R PAYS TO DREAM E756

Black Polled 3/4 SM 1/4 AN Tattoo: E756  
BD: 3/16/17 ASA# (3321204)

CNS DREAM ON L186

Sire: **CNS PAYS TO DREAM T759**  
MLF BL JESSIE K336

ASR LONGEVITY Y184

Dam: **R&R MISS LONGEVITY A341**  
R&R MISS TRAVELER T729

BW	90
Adj. WW	741
API	142
TI	76

CE	BW	WW	YW	MCE	MM	MWW	Stay	CW	YG	Marb	BF	REA
9.4	1.8	60.9	96.6	11.8	15.4	45.9	11.3	30.3	-.20	.51	-.026	.69

The Longevity daughters are great cows. Strong all purpose and terminal indexes.

LOT 23

## R&R PAYS TO DREAM E775

Black Polled PB SM Tattoo: E775  
BD: 3/19/17 ASA# (3321247)

CNS DREAM ON L186

Sire: **CNS PAYS TO DREAM T759**  
MLF BL JESSIE K336

MR NLC UPGRADE U8676

Dam: **R&R MISS UPGRADE A325**  
R&R MISS T510 P42

BW	84
Adj. WW	730
API	134
TI	77

CE	BW	WW	YW	MCE	MM	MWW	Stay	CW	YG	Marb	BF	REA
11.7	1	61.8	97.6	9.8	15.1	46	6.8	29.8	-.28	.44	-.047	.74

Strong performance values with a time-proven pedigree.

LOT 24

## R&R PAYS TO DREAM E782

Black Polled 3/4 SM 1/4 AN Tattoo: E782  
BD: 3/20/17 ASA# (3321219)

CNS DREAM ON L186

Sire: **CNS PAYS TO DREAM T759**  
MLF BL JESSIE K336

S A V 8180 TRAVELER 004

Dam: **R&R MISS 004 S619**  
R&R MISS LEGACY K019

BW	88
Adj. WW	739
API	128
TI	66

CE	BW	WW	YW	MCE	MM	MWW	Stay	CW	YG	Marb	BF	REA
11.1	0.2	50.4	81.5	10.6	20.3	45.5	11.1	19.2	-.19	.43	-.011	.63

Dam is an 11-year-old cow that is still producing with the young gals; that's longevity. Solid numerical values.



LOT 25

LOT 25

R&R MANDAN E725

Black Polled PB SM  
BD: 3/5/17  
Tattoo: E725  
ASA# (3321176)

GW PREMIUM BEEF 021TS

Sire: KR MR MANDAN A1

KNH SWEETHEART 15Y

MR HOC BROKER

Dam: R&R MISS BROKER B449

R&R MISS STAR W927

BW	90
Adj. WW	805
API	118
TI	74

CE	BW	WW	YW	MCE	MM	MWW	Stay	CW	YG	Marb	BF	REA
8.3	2.8	75.1	121.1	5.3	19.2	56.8	8.8	46.2	-.20	.11	-.054	.64

A power black baldy out of Mandan. Will add length of body and power.

**\$ Indexes:** Though EPDs allow for the comparison of genetic levels for many economically important traits, they only provide a piece of the economic puzzle. That's where \$ indexes come in. Through wellconceived, rigorous mathematical computation, \$ indexes blend EPDs and economics to estimate an animal's overall impact on your bottom line. The same technology that led to the dramatic progress in swine, poultry and dairy genetics over the last several decades was used to develop the following \$ indexes:

**All-Purpose Index (API):** Evaluates sires for use on the entire cow herd (bred to both Angus first-calf heifers and mature cows) with the portion of their daughters required to maintain herd size retained and the remaining heifers and steers put on feed and sold grade and yield.

**Terminal Index (TI):** Evaluates sire for use on mature Angus cows with all offspring put on feed and sold grade and yield.



LOT 27

LOT 26

R&R MANDAN E727

Black Polled 5/8 SM 1/4 AN 1/8 MX  
BD: 3/6/17  
Tattoo: E727  
ASA# (3321175)

GW PREMIUM BEEF 021TS

Sire: KR MR MANDAN A1

KNH SWEETHEART 15Y

MR NLC UPGRADE U8676

Dam: R&R MISS UPGRADE B439

R&R TRUE JAZZ W939

BW	84
Adj. WW	775
API	124
TI	73

CE	BW	WW	YW	MCE	MM	MWW	Stay	CW	YG	Marb	BF	REA
13.8	-0.2	66.7	105.9	8.7	22.3	55.6	7.6	32.8	-.28	.28	-.050	.75

A black blaze Mandan out of a hard-working Upgrade cow. An easy fleshing thick calf.

LOT 27

R&R NIGHTRIDE E79

Black Polled 5/8 SM 3/8 AN  
BD: 3/7/17  
Tattoo: E79  
ASA# (3321147)

GW PREMIUM BEEF 021TS

Sire: J BAR J NIGHTRIDE 225Z

J BAR J MISS ND 793X

WCS MR RAZOR 1044Y

Dam: R&R MISS RAZOR C546

R&R MISS ANSWER T702

BW	78
Adj. WW	738
API	154
TI	80

CE	BW	WW	YW	MCE	MM	MWW	Stay	CW	YG	Marb	BF	REA
18.8	-2.9	60.8	90.2	11.3	15.9	46.3	10.6	19.1	-.20	.58	-.022	.57

E79 is a very attractive blaze faced son of the proven calving ease sire, Nightride. Started small, has performed well and has great numerical values.

LOT 28

R&R NIGHTRIDE E710

Black Polled 3/4 SM 1/4 AN  
BD: 3/10/17  
Tattoo: E710  
ASA# (3321144)

GW PREMIUM BEEF 021TS

Sire: J BAR J NIGHTRIDE 225Z

J BAR J MISS ND 793X

KR MR MANDAN A1

Dam: R&R MISS MANDAN C542

R&R MISS TYRA X046

BW	70
Adj. WW	769
API	151
TI	79

CE	BW	WW	YW	MCE	MM	MWW	Stay	CW	YG	Marb	BF	REA
18.3	-2.8	61	96.9	9.9	21.6	52.1	10.3	23.7	-.19	.52	-.017	.64

Solid black son of Nightride out of the very productive 046 cow family. A unique genetic combination of calving ease and performance out of a proven cow family.

LOT 29

R&R COMPONENT E723

Black Polled 3/8 SM 5/8 AN  
BD: 3/2/17  
Tattoo: E723  
ASA# (3321231)

MOHNEN SOUTH DAKOTA 402

Sire: RUST COMPONENT 306C

TNT MISS U188

BARSTOW CASH

Dam: R&R MISS CASH B402

R&R MISS WORTH Z216

BW	88
Adj. WW	808
API	132
TI	79

CE	BW	WW	YW	MCE	MM	MWW	Stay	CW	YG	Marb	BF	REA
10.4	2.2	82.6	134.6	6.8	21.3	62.6	12.2	53.3	-.01	.43	-.001	.56

Strong performance numbers, proven genetics.



LOT 30

## R&R COMPONENT E768

Black Polled 5/8 SM 3/8 AN  
BD: 3/18/17

Tattoo: E768  
ASA# (3321243)

MOHNEN SOUTH DAKOTA 402

Sire: RUST COMPONENT 306C  
TNT MISS U188

MR HOC BROKER

Dam: R&R MISS BROKER B429  
R&R MISS MARATHON U820

BW	90
Adj. WW	740
API	104
TI	66

CE	BW	WW	YW	MCE	MM	MWW	Stay	CW	YG	Marb	BF	REA
3.7	3.7	72.8	106.8	3.3	21.4	57.8	10.9	38.7	-.07	.16	-.013	.48

Deep rib design, high performance growth bull.



LOT 31

## R&R COMPONENT E784

Black Polled 1/2 SM 1/2 AN  
BD: 3/21/17

Tattoo: E784  
ASA# (3321240)

MOHNEN SOUTH DAKOTA 402

Sire: RUST COMPONENT 306C  
TNT MISS U188

DOUBLE J SHEAR EASE Y125

Dam: R&R MISS SHEAR EASE B457  
R&R MISS BISMARK X09

BW	90
Adj. WW	715
API	130
TI	71

CE	BW	WW	YW	MCE	MM	MWW	Stay	CW	YG	Marb	BF	REA
12.2	1.5	64.7	95.4	6.7	24.6	57	12.1	28.8	-.10	.36	-.004	.59

Solid black, balanced numerical values.

LOT 32

## R&R COMPONENT E722

Black Polled 5/8 SM 3/8 AN  
BD: 2/26/17

Tattoo: E722  
ASA# (3321244)

MOHNEN SOUTH DAKOTA 402

Sire: RUST COMPONENT 306C  
TNT MISS U188

MR NLC UPGRADE U8676

Dam: R&R MISS UPGRADE B427  
R&R MISS ANSWER S604

BW	92
Adj. WW	774
API	132
TI	81

CE	BW	WW	YW	MCE	MM	MWW	Stay	CW	YG	Marb	BF	REA
8.5	2.7	81.1	126.1	5	18.8	59.3	10.5	48.8	-.09	.46	-.020	.61

Top end weaning and yearling performance.

LOT 33

## R&R COMPONENT E7105

Black Polled 3/4 SM 1/4 AN  
BD: 3/27/17

Tattoo: E7105  
ASA# (3321162)

MOHNEN SOUTH DAKOTA 402

Sire: RUST COMPONENT 306C  
TNT MISS U188

RC CLUB KING 040R

Dam: R&R QUEEN Z259  
R&R DREAM GIRL S641

BW	85
Adj. WW	856
API	135
TI	78

CE	BW	WW	YW	MCE	MM	MWW	Stay	CW	YG	Marb	BF	REA
10.2	2.1	79.5	121.7	7.2	21.6	61.4	14.2	45.1	-.07	.34	-.021	.51

Top 10% of population for weaning and yearling growth.



LOT 33

LOT 34

## R&R CONFIDENCE E74

Black Polled 1/8 SM 7/8 AN  
BD: 3/1/17

Tattoo: E74  
ASA# (3321132)

CONNEALY CONFIDENCE 0100

Sire: CONNEALY CONFIDENCE PLUS  
ELBANNA OF CONANGA 1209

BARSTOW CASH

Dam: R&R MISS CASH C501  
R&R MISS THUNDER A309

BW	80
Adj. WW	823
API	165
TI	89

CE	BW	WW	YW	MCE	MM	MWW	Stay	CW	YG	Marb	BF	REA
19.9	-2	81.5	144.6	10.3	22.7	63.5	10.3	53.6	-.04	.68	.012	.77

High percentage Angus pedigree with a great numerical profile; 104 birth weight index and 110 weaning.

LOT 35

## R&R CONFIDENCE E78

Black Polled 1/4 SM 3/4 AN  
BD: 3/5/17

Tattoo: E78  
ASA# (3321138)

CONNEALY CONFIDENCE 0100

Sire: CONNEALY CONFIDENCE PLUS  
ELBANNA OF CONANGA 1209

S A V BISMARCK 5682

Dam: R&R MISS BISMARCK C515  
R&R MISS LIBERTY R515

BW	80
Adj. WW	838
API	151
TI	89

CE	BW	WW	YW	MCE	MM	MWW	Stay	CW	YG	Marb	BF	REA
18.5	-1	84	147.4	10.5	23.9	65.9	9.3	56.6	-.02	.55	.017	.78

Strong SimAngus herdsire candidate with breed leading numerical values; 104 birth index and 112 weaning.

LOT 36

## R&R CONFIDENCE E712

Black Polled 3/8 SM 5/8 AN Tattoo: E712  
BD: 3/10/17 ASA# (3321145)

CONNEALY CONFIDENCE 0100

Sire: **CONNEALY CONFIDENCE PLUS**  
ELBANNA OF CONANGA 1209

WCS MR RAZOR 1044Y

Dam: **R&R MISS RAZOR C563**

R&R MISS TRAVELER T744

BW	85
Adj. WW	788
API	145
TI	82

CE	BW	WW	YW	MCE	MM	MWW	Stay	CW	YG	Marb	BF	REA
16.3	-0.1	75.4	119.1	6.6	23.1	60.8	11.2	40.5	-.13	.55	-.003	.77

Solid calving ease with strong growth numbers.



LOT 38



LOT 39

LOT 40

## R&R BISMARCK E72

Black Polled 1/4 SM 3/4 AN Tattoo: E72  
BD: 2/25/17 ASA# (3321128)

CONNEALY CONFIDENCE 0100

Sire: **CONNEALY CONFIDENCE PLUS**  
ELBANNA OF CONANGA 1209

S A V ANGUS VALLEY 1867

Dam: **R&R MISS AN VALLEY C532**

R&R QUEEN Z204

BW	68
Adj. WW	696
API	159
TI	84

CE	BW	WW	YW	MCE	MM	MWW	Stay	CW	YG	Marb	BF	REA
20.1	-3.5	66.8	121.5	10.4	23.1	56.5	10.5	37.9	-.06	.64	.015	.64

Strong calving ease pedigree.

LOT 37

## R&R CONFIDENCE E711

Black Polled 3/8 SM 5/8 AN Tattoo: E711  
BD: 3/11/17 ASA# (3321141)

CONNEALY CONFIDENCE 0100

Sire: **CONNEALY CONFIDENCE PLUS**  
ELBANNA OF CONANGA 1209

W/C UNITED 956Y

Dam: **R&R MISS UNITED C522**

R&R TYRA X049

BW	84
Adj. WW	845
API	156
TI	93

CE	BW	WW	YW	MCE	MM	MWW	Stay	CW	YG	Marb	BF	REA
15.6	-0.4	87.5	150.3	8.9	25.1	68.8	10.2	59	-.01	.67	-.017	.78

Confidence Plus calving ease and growth in a very consistent package; 113 index at weaning.

LOT 38

## R&R BISMARCK E70

Black Polled 1/4 SM 3/4 AN Tattoo: E70  
BD: 2/18/17 ASA# (3321254)

G A R GRID MAKER

Sire: **S A V BISMARCK 5682**

S A V ABIGALE 0451

BARSTOW CASH

Dam: **R&R MISS CASH C503**

R&R MISS LONGEVITY A320

BW	74
Adj. WW	854
API	141
TI	84

CE	BW	WW	YW	MCE	MM	MWW	Stay	CW	YG	Marb	BF	REA
17.3	-1.5	84.4	138	9.9	17.5	59.7	9.9	49.8	-.12	.37	-.010	.78

74 lb. actual birth weight, 854 lb. adj. 205; 3rd out of 57 for a 114 weaning index. Out of a first-calf heifer.

LOT 39

## R&R BISMARCK E71

Black Polled 3/8 SM 5/8 AN Tattoo: E71  
BD: 2/23/17 ASA# (3321152)

G A R GRID MAKER

Sire: **S A V BISMARCK 5682**

S A V ABIGALE 0451

KR MR MANDAN A1

Dam: **R&R MISS MANDAN C521**

R&R LITTLE THUNDER Y134

BW	70
Adj. WW	750
API	129
TI	72

CE	BW	WW	YW	MCE	MM	MWW	Stay	CW	YG	Marb	BF	REA
17.6	-2.2	63.9	105.2	9.4	24.5	56.5	8.8	29.7	-.13	.32	-.013	.56

This guy is one sought-made herdsire prospect. Good calving ease and strong growth numbers.

LOT 41

## R&R RIGHT ANSWER E76

Black Polled 3/8 SM 5/8 AN Tattoo: E76  
BD: 3/2/17 ASA# (3321148)

S A V FINAL ANSWER 0035

Sire: **CONNEALY RIGHT ANSWER 746**

HAPPY DELL OF CONANGA 262

WCS MR RAZOR 1044Y

Dam: **R&R MISS RAZOR C553**

R&R MISS ANSWER S603

BW	74
Adj. WW	770
API	133
TI	72

CE	BW	WW	YW	MCE	MM	MWW	Stay	CW	YG	Marb	BF	REA
17.6	-1.8	67.6	105.4	7.7	22.7	56.5	11.4	30.1	-.01	.30	-.003	.26

Right Answer is a highly-proven bull for calving ease and strong maternal traits. His Razor sired dam adds the growth genetics to the equation.

LOT 42

## R&R INSIGHT E739

Black Polled 3/8 SM 5/8 AN  
BD: 3/10/17

Tattoo: E739  
ASA# (3321168)

S A V BRILLIANCE 8077

Sire: **PVF INSIGHT 0129**  
PVF MISSIE 790

3C ICON T7108 B

Dam: **R&R MISS ICON W968**  
R&R MISS 004 S648

BW	84
Adj. WW	711
API	117
TI	65

CE	BW	WW	YW	MCE	MM	MWW	Stay	CW	YG	Marb	BF	REA
13.2	-0.2	62.6	102	7.6	18.5	49.8	11.2	30.7	-0.32	.17	-.020	1.09

Good calving ease with strong growth numbers out of a top producing cow family. PVF Insight is a popular Genex AI sire.

LOT 44

## CABLES LOCKED UP 582E

Black Homo Polled 5/8 SM 3/8 AN  
BD: 2/23/17

Tattoo: 582E  
ASA# 3300958

REMINGTON LOCK N LOAD54U

Sire: **W/C LOCK DOWN 206Z**  
G C F MISS NEW LEVELR206

R&R UPGRADE Z948

Dam: **CABLES 948 582C**  
MISS WERNING 082X

BW	90
Adj. WW	882
API	127
TI	76

CE	BW	WW	YW	MCE	MM	MWW	Stay	CW	YG	Marb	BF	REA
12.2	1.7	76.5	121.7	-0.9	13.8	52.1	9.1	44.8	-0.14	.30	-.033	.62

582 has been a standout since Birth. A nice birth to yearling spread, ranking 1 of 13 for weaning. He ratios 109, out of a productive 1st calf hfr. Tested homozygous blk. and polled.

LOT 45

## CABLES LOADED 54E

Black Polled 1/2 SM 1/2 AN  
BD: 2/20/17

Tattoo: 54E  
ASA# 3300965

REMINGTON LOCK N LOAD54U

Sire: **W/C LOCK DOWN 206Z**  
G C F MISS NEW LEVELR206

BUSHES UNBELIEVABLE423

Dam: **CABLES UNBELIEVABLE 54C**  
CABLE OVERDRIVE A312

BW	90
Adj. WW	793
API	132
TI	73

CE	BW	WW	YW	MCE	MM	MWW	Stay	CW	YG	Marb	BF	REA
15.2	0.3	67.2	104.9	2.8	12.8	46.4	10.3	32.9	-0.11	.45	-.024	.43

A stout and rugged Black Baldy bull, going back to Bush's Unbelievable, on the Dam side, with a 15.4 CE EPD.

LOT 46

## CABLES O FACTOR 502E

Homo Black Homo Polled 1/2 SM 1/2 AN  
BD: 2/27/17

Tattoo: 502E  
ASA# 3300966

S A V FINAL ANSWER 0035

Sire: **VIN-MAR O'REILLY FACTOR**  
VIN-MAR EDELLA 2827

R&R CHAMBERLAIN X744

Dam: **CABLE CHERRY ROSE 502C**  
C CROSS MISS INVASION

BW	72
Adj. WW	782
API	130
TI	72

CE	BW	WW	YW	MCE	MM	MWW	Stay	CW	YG	Marb	BF	REA
13	-1	66	110.5	7.5	23.4	56.4	11.9	34.6	-0.19	.33	-.048	.52

A low birth weight bull with look, and solid EPD. Ratio of 116 on birth and tested homozygous blk. and polled. We really like the O' Reilly Factor calves.

LOT 43

## CABLES LOADED 512E

Black Homo Polled 5/8 SM 3/8 AN  
BD: 2/23/17

Tattoo: 512E  
ASA# 3300970

REMINGTON LOCK N LOAD54U

Sire: **W/C LOCK DOWN 206Z**  
G C F MISS NEW LEVELR206

R&R SHAQ A049

Dam: **CABLE BLACK ROSE 512C**  
C-CROSS CHAMBERLAIN 212Z

BW	82
Adj. WW	830
API	136
TI	75

CE	BW	WW	YW	MCE	MM	MWW	Stay	CW	YG	Marb	BF	REA
13.2	0	69.5	105.3	-0.4	17.6	52.3	11.9	32.4	-0.17	.35	-.030	.58

512E is a nice 5/8 bull out of a 1st calf heifer, with actual BW of 82lbs, and a WW of 834. Homozygous Black and Polled.



LOT 44



LOT 45



LOT 46



**Using API and TI:** First, determine which index to use; if you're keeping replacements use API, if not, TI. Then, just as with EPDs, zero in on the unit difference between bulls. (As described above, index units are in dollars per cow exposed.) The difference can be used to determine how much a bull is worth compared to another. Or, put another way, how much you can pay for one bull compared to another. For example, when buying an all-purpose-type sire, you can quickly figure a bull scoring +100 for API is worth an extra \$6,000 over a +50 bull if both are exposed to 30 cows over 4 years (\$50 diff. x 30 hd. x 4 yr. = \$6,000). A percentile-ranking chart is required to determine where a bull's index value ranks him relative to other bulls in the breed. For percentile rankings or more detailed information about EPDs and \$ indexes visit [www.simmental.org](http://www.simmental.org).



LOT 48

## CABLES INSIGHT 342A

LOT 49

Black Polled 1/4 SM 3/4 AN  
BD: 3/24/17

Tattoo: 342E  
ASA# 3300962

S A V BRILLIANCE 8077

Sire: PVF INSIGHT 0129

PVF MISSIE 790

R&R CHAMBERLAIN X744

Dam: CABLE CHAMBERLAIN 342A

742

BW	92
Adj. WW	827
API	108
TI	70

CE	BW	WW	YW	MCE	MM	MWW	Stay	CW	YG	Marb	BF	REA
9.8	1.8	75	117.7	2.3	19.3	56.8	7.2	42.6	-.22	.23	-.026	.90

We really like our Insight calves and, 342E is no different, he has power and muscle, with a REA EPD of 1.03 is really nice.



LOT 51

## CABLES O FACTOR 562E

LOT 47

Black Polled 3/8 SM 5/8 AN  
BD: 3/1/17

Tattoo: 562E  
ASA# 3300969

S A V FINAL ANSWER 0035

Sire: VIN-MAR O'REILLY FACTOR

VIN-MAR EDELLA 2827

R&R CHAMBERLAIN X744

Dam: CABLE ROSE 562C

R&R MISS PEGASUS R561

BW	80
Adj. WW	788
API	124
TI	70

CE	BW	WW	YW	MCE	MM	MWW	Stay	CW	YG	Marb	BF	REA
12.1	-0.3	65.8	110.6	7.5	24.1	57	10.9	35.8	-.17	.30	-.051	.46

A Standout O'Reilly Factor bull, with solid numbers and ratio of 107 for birth. His Grand dam has been an asset to our herd and the O'Reilly Factors are making nice cows.

## CABLES HAMMER UP 357E

LOT 48

Homo Black Homo Polled PB SM  
BD: 3/21/17

Tattoo: 357E  
ASA# 3302374

MR NLC UPGRADE U8676

Sire: MR TR HAMMER 308A ET

SVF/HS EXPECTING A DREAM

R&R CHAMBERLAIN X744

Dam: CABLES EBONY ZOEY 31A

SOSF EBONYS JOY L-123

BW	84
Adj. WW	844
API	120
TI	78

CE	BW	WW	YW	MCE	MM	MWW	Stay	CW	YG	Marb	BF	REA
5.3	2.3	78.7	120.7	4.5	23	62.4	9.4	44.9	-.29	.16	-.061	.85

Zoey has 2 bulls in this sale, and one to the BHSS, all from different sires. She consistent in producing good ones. Tested homozygous polled and blk.

## CABLES COWBOY E750

LOT 50

Homo Black Homo Polled 3/4 SM 1/4 AN  
BD: 3/20/17

Tattoo: E750  
ASA# 3300955

TRIPLE C SINGLETARY S3H

Sire: CCR COWBOY CUT 5048Z

CCR MS 4045 TIME 7322T

R&R PEGASUS R908

Dam: 750T

750

BW	86
Adj. WW	785
API	131
TI	76

CE	BW	WW	YW	MCE	MM	MWW	Stay	CW	YG	Marb	BF	REA
13.7	0.8	64.5	92.5	9.7	33.9	66.1	8.3	25.8	-.14	.48	-.013	.55

A rock solid, deep bodied and free moving Cowboy Cut, with solid numbers. He is tested homozygous polled and blk.

## CABLES UNBELIEVABLE 356E

LOT 51

Homo Black Homo Polled 1/2 SM 1/2 AN  
BD: 3/17/17

Tattoo: 356E  
ASA# 3302372

S A V BISMARCK 5682

Sire: BUSHS UNBELIEVABLE423

BUSHS BLACKBIRD 8708

R&R CHAMBERLAIN X744

Dam: CABLES EBONY ZOEY 31A

SOSF EBONYS JOY L-123

BW	82
Adj. WW	760
API	130
TI	74

CE	BW	WW	YW	MCE	MM	MWW	Stay	CW	YG	Marb	BF	REA
13.6	0.1	65.2	98.3	7.4	24.2	56.8	9.8	28.6	-.19	.49	-.039	.51

If raising and keeping heifers, you simply can't go wrong here. Unbelievable, Zoey and the Great Ebony Joy L-123 in the pedigree. Tested Homozygous polled and blk.

LOT 52

## CABLES UNITED 262E

Black Polled 3/8 SM 5/8 AN Tattoo: 262E  
BD: 3/25/17 ASA# 3300964

TNT TUITION U238

Sire: W/C UNITED 956Y

MISS WERNING 956W

CONNEALY THUNDER

Dam: R&R MISS THUNDER Z262

R&R MISS TYRA X062

BW	88
Adj. WW	823
API	136
TI	79

CE	BW	WW	YW	MCE	MM	MWW	Stay	CW	YG	Marb	BF	REA
12.3	0	75.2	129.6	7	21.5	59.1	10.8	47.6	-.01	.47	-.009	.56

A free moving bull, with muscle and a strong set of EPD's.

LOT 54

## CABLES MR SHAQ 276E

Black Polled 5/8 SM 3/8 AN Tattoo: 276E  
BD: 3/29/17 ASA# 3300960

SS EBONY'S GRANDMASTER

Sire: R&R SHAQ A049

R&R TYRA X049

R&R CHAMBERLAIN X744

Dam: C-CROSS CHAMBERLAIN 276Z

CABLES MISS DUKE 470

BW	94
Adj. WW	814
API	119
TI	68

CE	BW	WW	YW	MCE	MM	MWW	Stay	CW	YG	Marb	BF	REA
6.8	2.3	67.2	95	1.6	28.7	62.3	14.1	29.5	-.24	.24	-.035	.70

The Shaq bull was the high selling bull at the R&R sale several years ago. He has been giving us deep bodied, fault free calves, with Chamberlain on the bottom side, his calves will push the scale and you will want to keep the heifers.

LOT 53

## CABLES CHAMBERLAIN 764E

Black Polled 5/8 SM 3/8 AN Tattoo: 764E  
BD: 3/24/17 ASA# 3300956

MR NLC UPGRADE U8676

Sire: R&R CHAMBERLAIN X744

R&R MISS TRAVELER T744

R&R PEGASUS R908

Dam: 764T

764

BW	98
Adj. WW	780
API	105
TI	66

CE	BW	WW	YW	MCE	MM	MWW	Stay	CW	YG	Marb	BF	REA
5.8	3.5	65.1	92.5	2.8	25	57.5	8.7	29.8	-.37	.24	-.084	.72

We think the Chamberlain sons are hard to beat, for making high volume, sound moving, Stout calves and the Females are the same.

LOT 55

## CABLES 2 HIT 082E

Black Homo Polled 3/4 SM 1/4 AN Tattoo: 082E  
BD: 3/23/17 ASA# 3335636

R&R CHAMBERLAIN X744

Sire: CABLES 2 HIT WONDER 522C

C CROSS MISS INVASION

JS SURE BET 4T

Dam: MISS WERNING 082X

D W ANNIE 181

BW	89
Adj. WW	733
API	112
TI	62

CE	BW	WW	YW	MCE	MM	MWW	Stay	CW	YG	Marb	BF	REA
8.9	2.2	60	92.7	3	19.4	49.4	12.1	28.5	-.27	.15	-.033	.80

082's mother is also Grand dam to lot 44 and has been a real producer in our herd. She got hurt last summer and he was weaned in July, a little behind, but catching up quick. A really nice Chamberlain bred bull.

## OPEN HEIFERS

LOT 56

## R&R E77

Black Polled 1/2 SM 1/2 AN Tattoo: E77  
BD: 3/5/17 ASA# (3321137)

SITZ DASH 10277

Sire: BARSTOW CASH

BARSTOW QUEEN W16

WCS MR RAZOR 1044Y

Dam: R&R MISS RAZOR C533

R&R QUEEN Z259

BW	65
Adj. WW	630
API	139
TI	70

CE	BW	WW	YW	MCE	MM	MWW	Stay	CW	YG	Marb	BF	REA
18	-2.1	60.6	100.1	11.8	17.5	47.8	14.3	26.8	-.31	.30	-.039	.88

Solid black, excellent numerical values and a unique pedigree, hard to come by. Foundation cow material.

LOT 57

## R&R E728

Black Polled PB SM Tattoo: E728  
BD: 3/8/17 ASA# (3321234)

WS PILGRIM H182U

Sire: TKCC CARVER 65C

FORD RJ DOLLY Y83

WCS MR RAZOR 1044Y

Dam: R&R MISS RAZOR A355

R&R MISS LEGACY P49

BW	85
Adj. WW	707
API	124
TI	73

CE	BW	WW	YW	MCE	MM	MWW	Stay	CW	YG	Marb	BF	REA
10.6	1.3	68.8	85	8.6	14.1	48.5	9.8	21.4	-.27	.21	-.040	.67

I wanted to have a Carver heifer in the sale group for an example of what you can expect out of this new sire group. Solid black, good haired and excellent cow potential.

LOT 58

## R&R E732

Black Polled 3/4 SM 1/4 AN Tattoo: E732  
BD: 3/10/17 ASA# (3321159)

TRIPLE C SINGLETARY S3H

Sire: CCR COWBOY CUT 5048Z

CCR MS 4045 TIME 7322T

R&R CHAMBERLAIN X744

Dam: R&R MISS CHAMBER Z231

R&R MISS LEAD ON S601

BW	80
Adj. WW	623
API	139
TI	81

CE	BW	WW	YW	MCE	MM	MWW	Stay	CW	YG	Marb	BF	REA
12.8	1.6	71.7	102.5	7.4	31.1	67	9.9	32.9	-.22	.55	-.038	.68

E732 is strong pedigree, solid black Cowboy Cut out of a Chamberlain cross Connealy Lead On daughter.

LOT 59

## R&R E755

Black Polled 5/8 SM 3/8 AN Tattoo: E755  
BD: 3/16/17 ASA# (3321237)

GW PREMIUM BEEF 021TS

Sire: KR MR MANDAN A1

KNH SWEETHEART 15Y

CONNEALY THUNDER

Dam: R&R MISS THUNDER A309

R&R TYRA Y144

BW	68
Adj. WW	640
API	136
TI	70

CE	BW	WW	YW	MCE	MM	MWW	Stay	CW	YG	Marb	BF	REA
17.1	-1.9	52.1	90.5	9.6	29.2	55.3	10.1	21.9	-.22	.36	-.029	.59

Strong maternal values out of a low birth weight cow family.

LOT 60

**R&R E715**

Black Polled 1/2 SM 1/2 AN  
BD: 3/16/17

Tattoo: E715  
ASA# (3321156)

SITZ DASH 10277

Sire: **B M DASH 2328**

B M ANN 2111

WCS MR RAZOR 1044Y

Dam: **R&R MISS RAZOR C560**

R&R MONICA U80

BW	68
Adj. WW	634
API	134
TI	67

CE	BW	WW	YW	MCE	MM	MWW	Stay	CW	YG	Marb	BF	REA
16.6	-2.5	47.4	67.7	10	20.8	44.5	9.8	6.7	-.16	.42	.011	.53

Low birth, solid growth numbers, great profile.

LOT 61

**R&R E764**

Black Polled 5/8 SM 3/8 AN  
BD: 3/17/17

Tattoo: E764  
ASA# (3321241)

TRIPLE C SINGLETARY S3H

Sire: **CCR COWBOY CUT 5048Z**

CCR MS 4045 TIME 7322T

G A FREEDOM 11

Dam: **R&R MISS PRIDE U854**

R&R MISS CASH L118

BW	80
Adj. WW	636
API	141
TI	76

CE	BW	WW	YW	MCE	MM	MWW	Stay	CW	YG	Marb	BF	REA
15.9	0	59.1	87.1	10.9	35.6	65.2	9.6	21.7	-.11	.57	.019	.64

Attractive and balanced in her physical makeup as well as strong numerical values.

LOT 62

**R&R E781**

Black Polled PB SM  
BD: 3/20/17

Tattoo: E781  
ASA# (3321216)

GW PREMIUM BEEF 021TS

Sire: **KR MR MANDAN A1**

KNH SWEETHEART 15Y

MR NLC UPGRADE U8676

Dam: **R&R MISS UPGRADE B430**

R&R MISS TY X022

BW	82
Adj. WW	611
API	126
TI	73

CE	BW	WW	YW	MCE	MM	MWW	Stay	CW	YG	Marb	BF	REA
11.6	1.5	64	107.4	10.1	20.9	52.9	8.5	36.6	-.30	.21	-.047	.91

Stout made, good haired, strong numerical profile. Excellent cow potential with a performance pedigree.

LOT 63

**R&R E785**

Black Polled 3/4 SM 1/4 AN  
BD: 3/21/17

Tattoo: E785  
ASA# (3321230)

CNS DREAM ON L186

Sire: **CNS PAYS TO DREAM T759**

MLF BL JESSIE K336

B C MARATHON 7022

Dam: **R&R MARATHON U845**

R&R MISS LIBERTY R547

BW	90
Adj. WW	538
API	113
TI	62

CE	BW	WW	YW	MCE	MM	MWW	Stay	CW	YG	Marb	BF	REA
7.8	3.4	52.7	86	6.5	20.1	46.5	9.3	26.7	-.23	.38	-.026	.72

Solid black and sired by Pays to Dream. Predictable maternal genetics.

LOT 64

**R&R E7106**

Black Polled 3/4 SM 1/4 AN  
BD: 3/27/17

Tattoo: E7106  
ASA# (3321246)

CNS DREAM ON L186

Sire: **CNS PAYS TO DREAM T759**

MLF BL JESSIE K336

EGL FRONTIER 4098

Dam: **R&R MISS FRONTIER U847**

R&R MISS EDGE G726

BW	80
Adj. WW	651
API	127
TI	64

CE	BW	WW	YW	MCE	MM	MWW	Stay	CW	YG	Marb	BF	REA
11.5	-0.3	44.8	75.2	10.9	20	42.4	10.2	15.1	-.22	.45	-.032	.51

Attractive, well balanced solid black female out of a strong cow family with longevity.

LOT 65

**R&R E746**

Black Polled PB SM  
BD: 4/26/17

Tattoo: E746  
ASA# (3321202)

GW PREMIUM BEEF 021TS

Sire: **KR MR MANDAN A1**

KNH SWEETHEART 15Y

HS/HSF TITANIUM T30N

Dam: **R&R MISS TYRA X046**

R&R TRISHA P412

BW	90
Adj. WW	748
API	125
TI	73

CE	BW	WW	YW	MCE	MM	MWW	Stay	CW	YG	Marb	BF	REA
11	2.1	70.3	109.2	8.2	28.4	63.6	10.9	38	-.22	.11	-.030	.79

The youngest heifer in the sale. Balanced strong numerical values in a very attractive package out of the proven 046 cow.

**NOTES**



## QUICK GUIDE TO ASA EPDs AND \$ INDEXES

**Expected Progeny Differences (EPDs):** EPDs are the most accurate and effective tool available for comparing genetic levels. In using EPDs, the difference between two sires' EPDs represents the unit difference expected in the performance of their progeny. For example, if sires A and B have EPDs of +10 and -5, a 15-unit difference would be expected in their progeny (moving from -5 to +10 yields 15 units). Key to using EPDs is knowing what units they are expressed in. For example, if the above case referred to weaning weight EPDs, A would be expected to sire 15-pounds more *weaning weight* than B. If calving ease were the trait, A would be expected to sire 15-percent more *unassisted births* in first-calf heifers; in other words, if B sired 30 assists in a group of 100 heifers, we'd expect A to require 15 assists. A percentile-ranking chart is required to determine where a bull's EPDs rank him relative to other bulls in the breed. For percentile rankings or more detailed information about EPDs and \$ indexes visit [www.simmental.org](http://www.simmental.org). Listed below are the units ASA EPDs are expressed in:

**All-Purpose Index (API):** Dollars per cow exposed under an all-purpose-sire scenario. (See below for more details.)

**Back Fat (BF):** Inches of backfat.

**Birth Weight (BW):** Pounds of birth weight.

**Calving Ease (CE):** Percent of unassisted births when used on heifers.

**Carcass Weight (CW):** Pounds of carcass weight.

**Maternal Calving Ease (MCE):** Percent of unassisted births in first-calving daughters.

**Milk (MLK):** Pounds of weaning weight due to milk.

**Marbling (MRB):** Marbling score.

**Maternal Weaning Weight (MWW):** Pounds of weaning weight due to milk and growth.

**Ribeye Area (REA):** Square inches of ribeye.

**Warner-Bratzler Shear Force (WBSF):** Pounds of force required to shear a steak.

**Stayability (STAY):** Percent of daughters remaining in the cowherd at 6 years of age.

**Terminal Index (TI):** Dollars per cow exposed under a terminal-sire scenario. (See below for more details.)

**Weaning Weight (WW):** Pounds of weaning weight.

**Yearling Weight (YW):** Pounds of yearling weight.

**Yield Grade (YG):** Yield grade score.

**\$ Indexes:** Though EPDs allow for the comparison of genetic levels for many economically important traits, they only provide a piece of the economic puzzle. That's where \$ indexes come in. Through well-conceived, rigorous mathematical computation, \$ indexes blend EPDs and economics to estimate an animal's overall impact on your bottom line. The same technology that led to the dramatic progress in swine, poultry and dairy genetics over the last several decades was used to develop the following \$ indexes:

**All-Purpose Index (API):** Evaluates sires for use on the entire cow herd (bred to both Angus first-calf heifers and mature cows) with the portion of their daughters required to maintain herd size retained and the remaining heifers and steers put on feed and sold grade and yield.

**Terminal Index (TI):** Evaluates sire for use on mature Angus cows with all offspring put on feed and sold grade and yield.

**Using API and TI:** First, determine which index to use; if you're keeping replacements use API, if not, TI. Then, just as with EPDs, zero in on the unit difference between bulls. (As described above, index units are in dollars per cow exposed.) The difference can be used to determine how much a bull is worth compared to another. Or, put another way, how much you can pay for one bull compared to another. For example, when buying an all-purpose-type sire, you can quickly figure a bull scoring +100 for API is worth an extra \$6,000 over a +50 bull if both are exposed to 30 cows over 4 years ( $\$50 \text{ diff.} \times 30 \text{ hd.} \times 4 \text{ yr.} = \$6,000$ ). A percentile-ranking chart is required to determine where a bull's index value ranks him relative to other bulls in the breed. For percentile rankings or more detailed information about EPDs and \$ indexes.



*Cattle Company*

**Steve & Elaine Reimer**

25657 345th Ave

Chamberlain, SD 57325

605-234-6111 • 605-680-1939

[rrcattle@midstatesd.net](mailto:rrcattle@midstatesd.net)

[www.rrcattleco.com](http://www.rrcattleco.com)

# Annual Bull Female Sale

Friday, February 16, 2018

1:00 PM • at the Ranch • Chamberlain, SD

**Selling 55 Yearling Bulls  
and 10 Open Heifers**

